



**FACILITIES AND
CAMPUS OPERATIONS**
George Mason University®

University Drive/Ox Road (123) Pedestrian Overpass

 **Fairfax Campus Community Advisory Board Presentation**

April 23, 2026

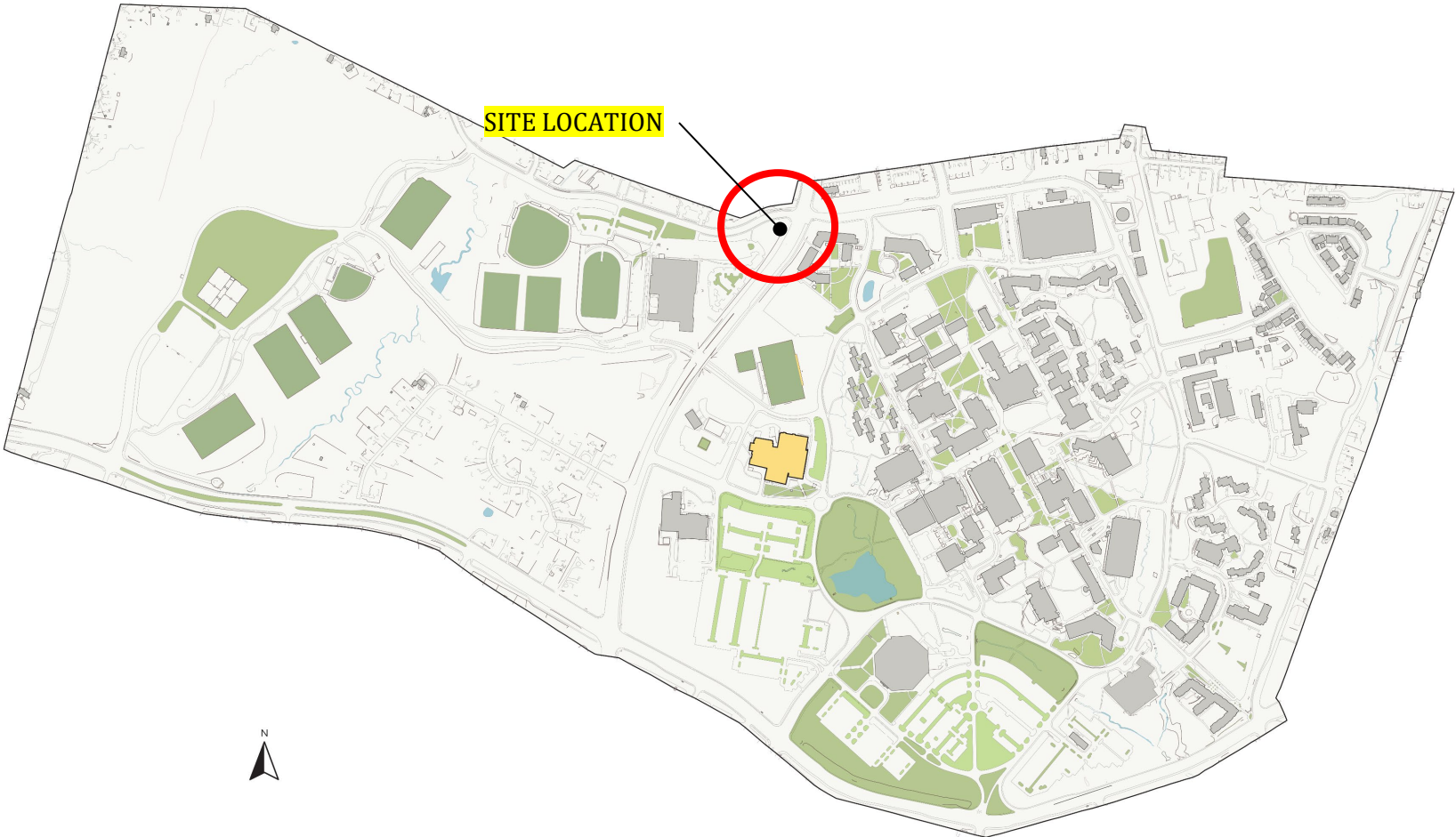
Project Information

Project Name:
University Drive/Ox Road
(123) Pedestrian Overpass

Architect/Engineer:
Whitman, Requardt &
Associates (WRA)



Project Status:
Design





Project Goals

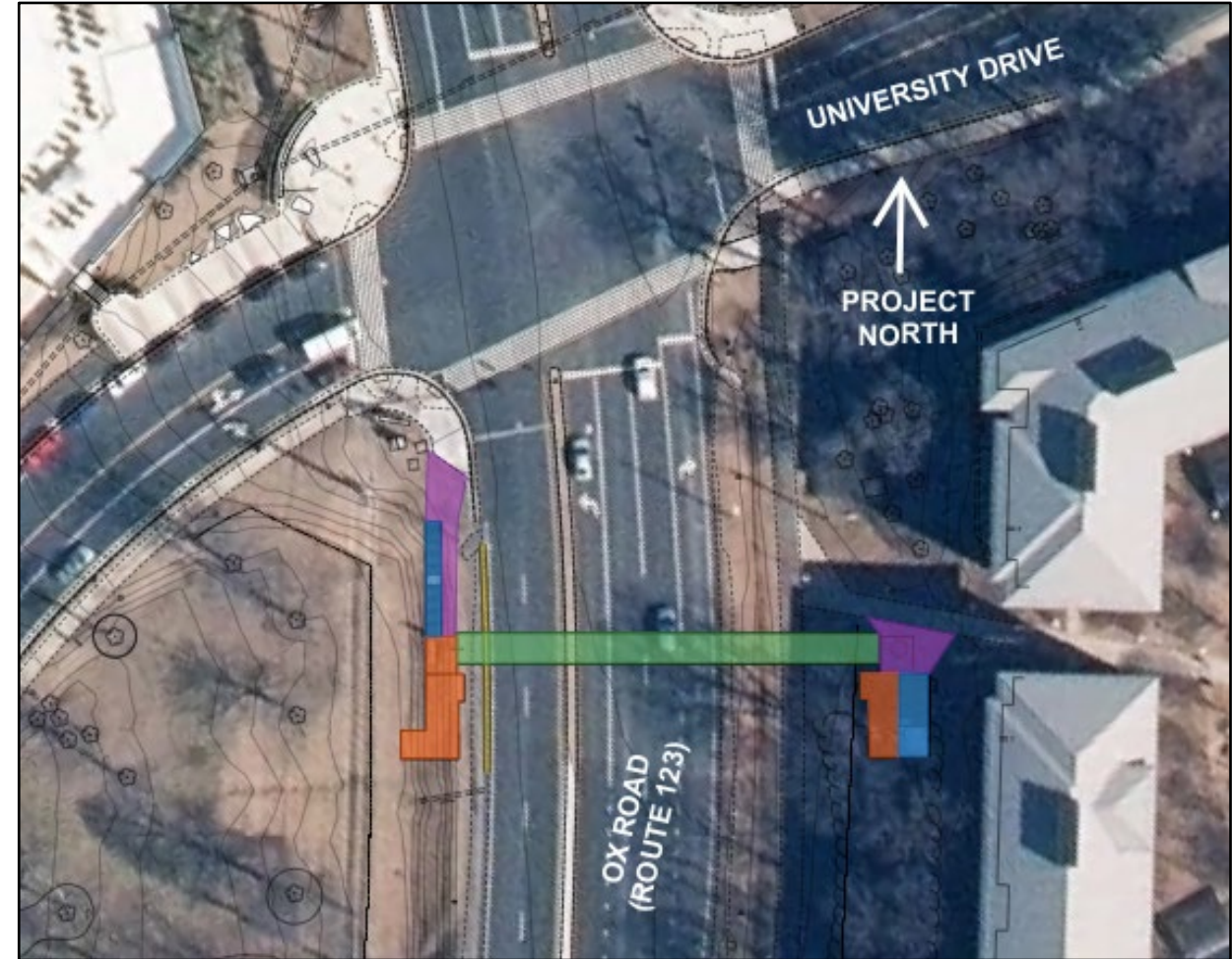
- Promote student safety
- Improve safety for pedestrians and vehicles
- Provide a “gateway” to signify the entrance to campus

Project Background

- Safety Risk at pedestrian crossings
- Fall 2024 Concept Study
 - Investigated tunnel versus bridge
 - Bridge selected as best option
 - Location identified
- Spring 2026 Pedestrian Counts
 - 200+ crossings per hour at peak times to/from West Campus
 - Vehicular traffic delays increased at peak crossing times

Project Overview – Approach Paths

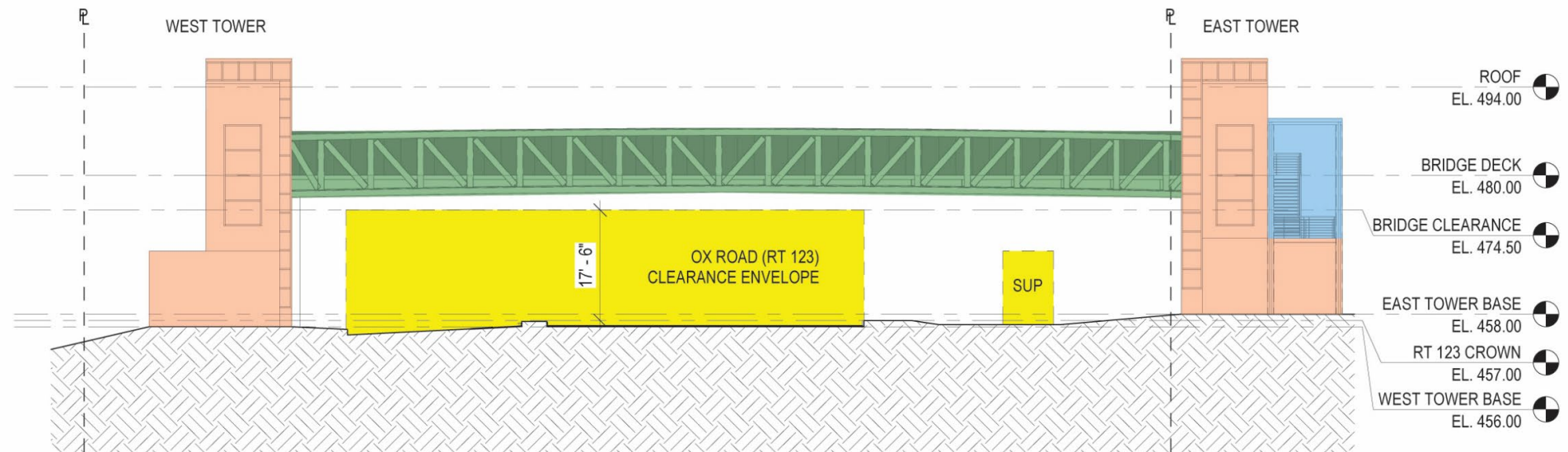
- West Approach
 - New direct sidewalk connection from the bridge and access tower to the existing intersection along southbound Ox Road
 - Within VDOT Right of Way (coordination on-going)
- East Approach
 - New connection to existing sidewalk between residence halls
 - Seamless connection to existing shared use path along Ox Road
- No physical barrier to prevent at-grade crossings
 - Need at-grade crossing to meeting VDOT requirements for intersections
 - Bikes and scooters have option for bridge or at-grade crossing



Project Overview – Bridge and Access Towers Concepts

- Details

- Prefabricated truss bridge, uncovered and open on the top
- Concrete deck planned to be heated
- Fencing to meet VDOT height and anti-climb requirements
- Lighting and security cameras to support safety on bridge
- Includes stairs and elevators at access towers
- Materials to reflect context and GMU campus aesthetic
 - Possible materials include: brick, masonry, metal panel, metal wire mesh, glazing/storefront
- Proposed bridge lights, signage, and pedestrian movements will be designed to reduce potential distractions to drivers



Project Overview – Construction Considerations

- Tower Construction and Site Development
 - Will require temporary lane closures on University Drive and Ox Road (off-peak hours)
 - Pedestrian detours will be in place between Rogers Hall and White Top Hall
 - Work hours will be restricted to consider residential and University proximity
 - Work restrictions will be in place during certain University Events (such as graduations)
- Bridge Construction
 - Will be closely coordinated with the tower construction to minimize impact to the public and reduce risk to the project
 - Prefabricated truss will reduce construction duration but will require an overnight road closure for erection

Next Steps

- Continued coordination with stakeholders
 - City of Fairfax
 - Community Associations
 - Fairfax County
 - Utility Companies
 - VDOT
- Design continues through Mid-2027
- Early start for Construction is anticipated Late-2027 (dependent on completion of enabling utility work) with an expected duration of approximately 18 months.

Discussion / Questions