

GMU West Campus Lightning Detection and Notification System



Lightning Detection

- Lightning and severe weather is a known threat
- Some areas of Mason are more vulnerable to severe weather:
 - Students, athletes, and visitors on West Campus
 - Individuals with limited/no access to Mason Alert
 - West Campus parking/shuttle areas
- Lightning policies required by NCAA regulations
- Protects spectators and students



NCAA Requirements

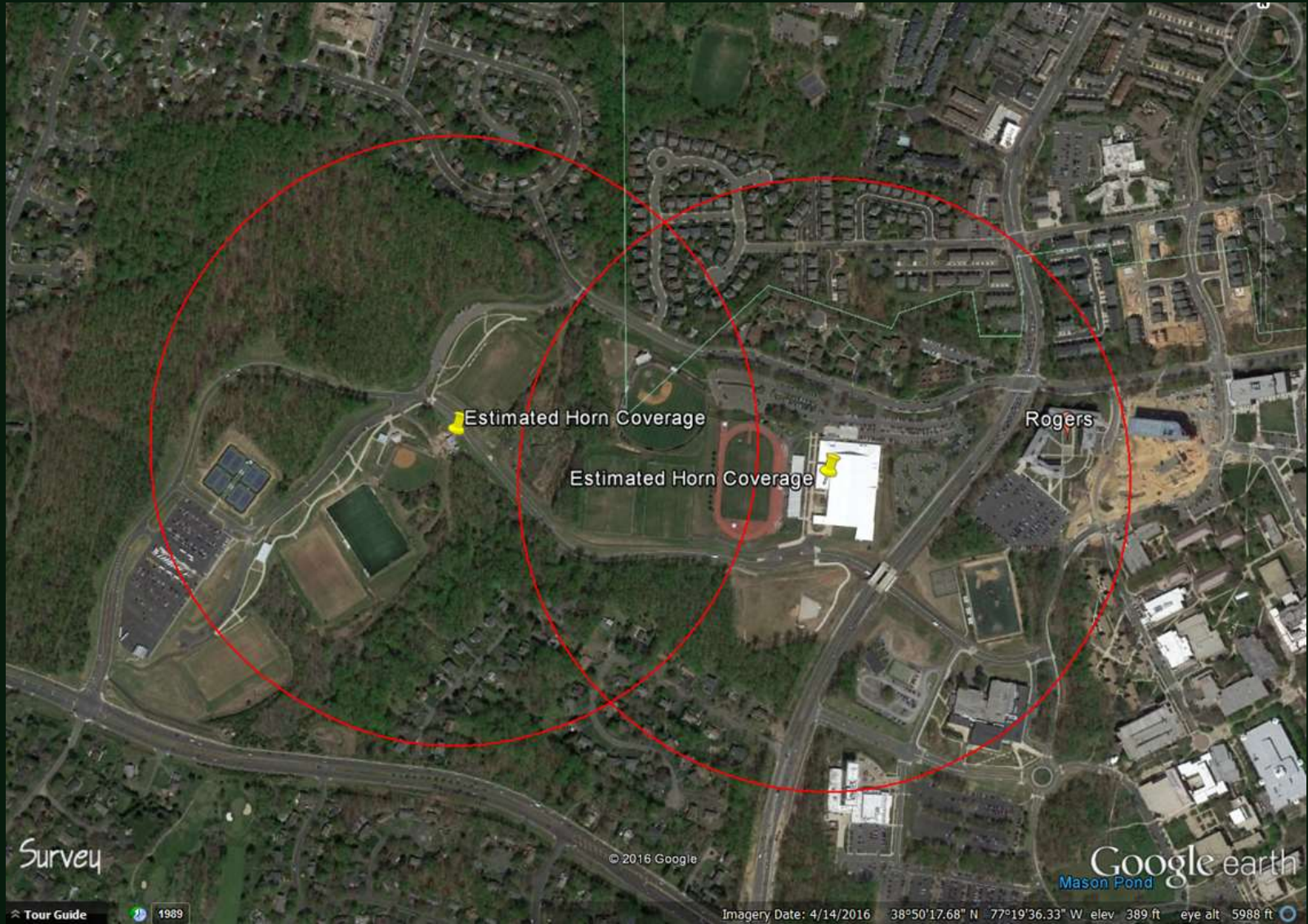
- Develop a lightning safety plan for each outdoor venue
- Designate a person to monitor threatening weather and make notifications
- Monitor local weather reports daily before any practice or event.
- Be informed of National Weather Service (NWS) issued thunderstorm watches or warnings
- Know where the closest “safer structure or locations” for each playing area
- Lightning awareness should be heightened at the first flash of lightning, clap of thunder, and/or other signs

Solution

- Earth Networks Total Lightning Network®
- Stand alone system limited points of failure
- Automated real-time lightning detection
 - Uses lightning sensors throughout the world
 - Custom alert ranges (e.g. 5-15 miles)
 - Text message notification to key personnel
 - Software offers customization and monitoring
- Reduces warning time and human error



Proposed Installation Locations



Audible and Visual Warning

- Alert Tone and Strobe Light Warning
 - Tone for 15 seconds when lightning is within range
 - 3 x 5 second tone bursts at 30 minute all clear
 - No audible tone between alerts – strobes only



Questions

- System can:
 - Be programmed to run during specific hours/days
 - Conform to local noise ordinances
 - Be turned off when not needed
- System cannot:
 - Be turned down
 - Be focused in a specific direction
 - Provide audible voice messages



Maryland Soccerplex

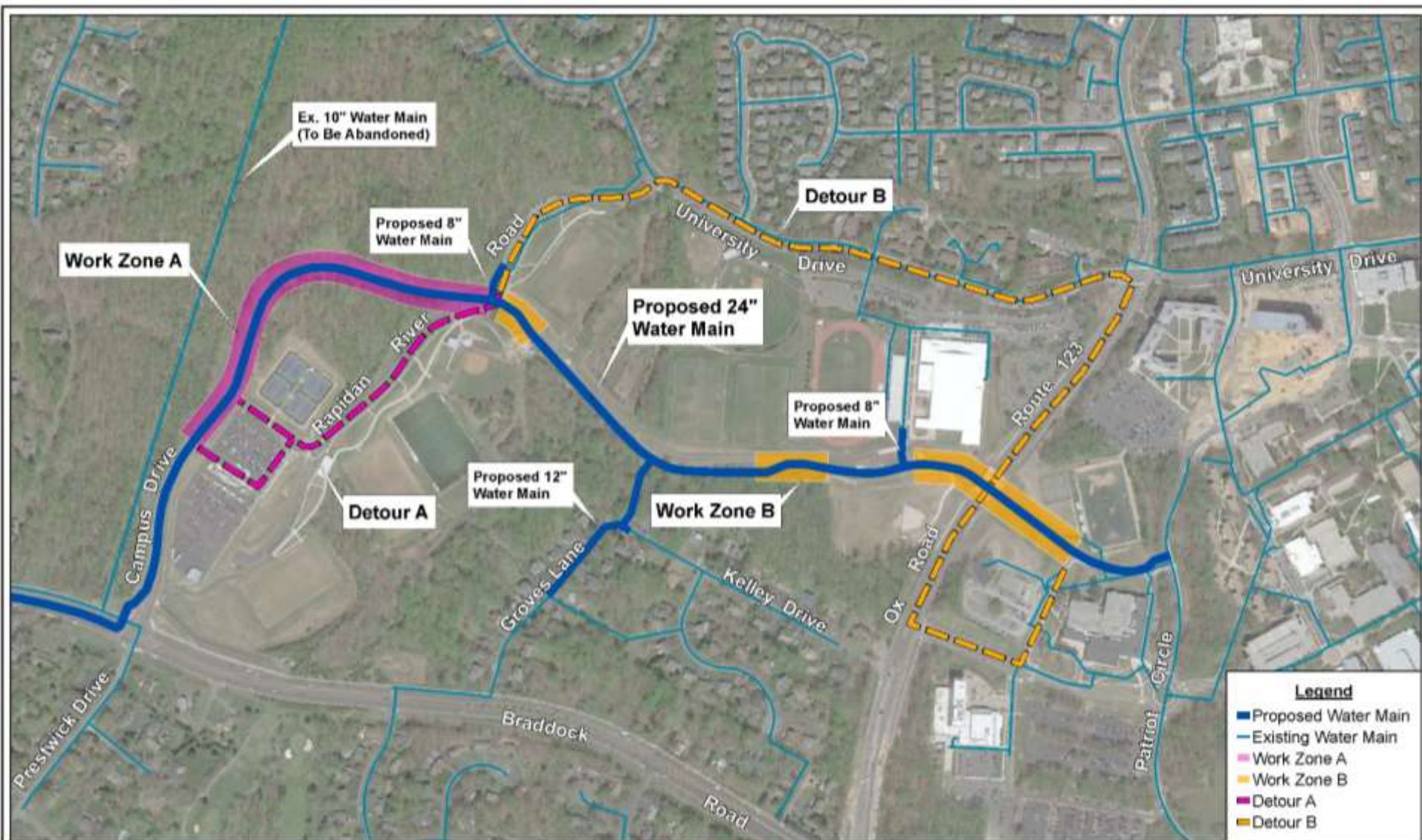


Bucknell News Report



Braddock Road Transmission Main – Phase I





Legend

	Proposed Water Main
	Existing Water Main
	Work Zone A
	Work Zone B
	Detour A
	Detour B

Fairfax Water

**Braddock Road Transmission Main - Phase I
Maintenance of Traffic Alternatives**

