

West Campus Connector Advisory Group Meeting

George Mason University and
Branch Highways Inc.

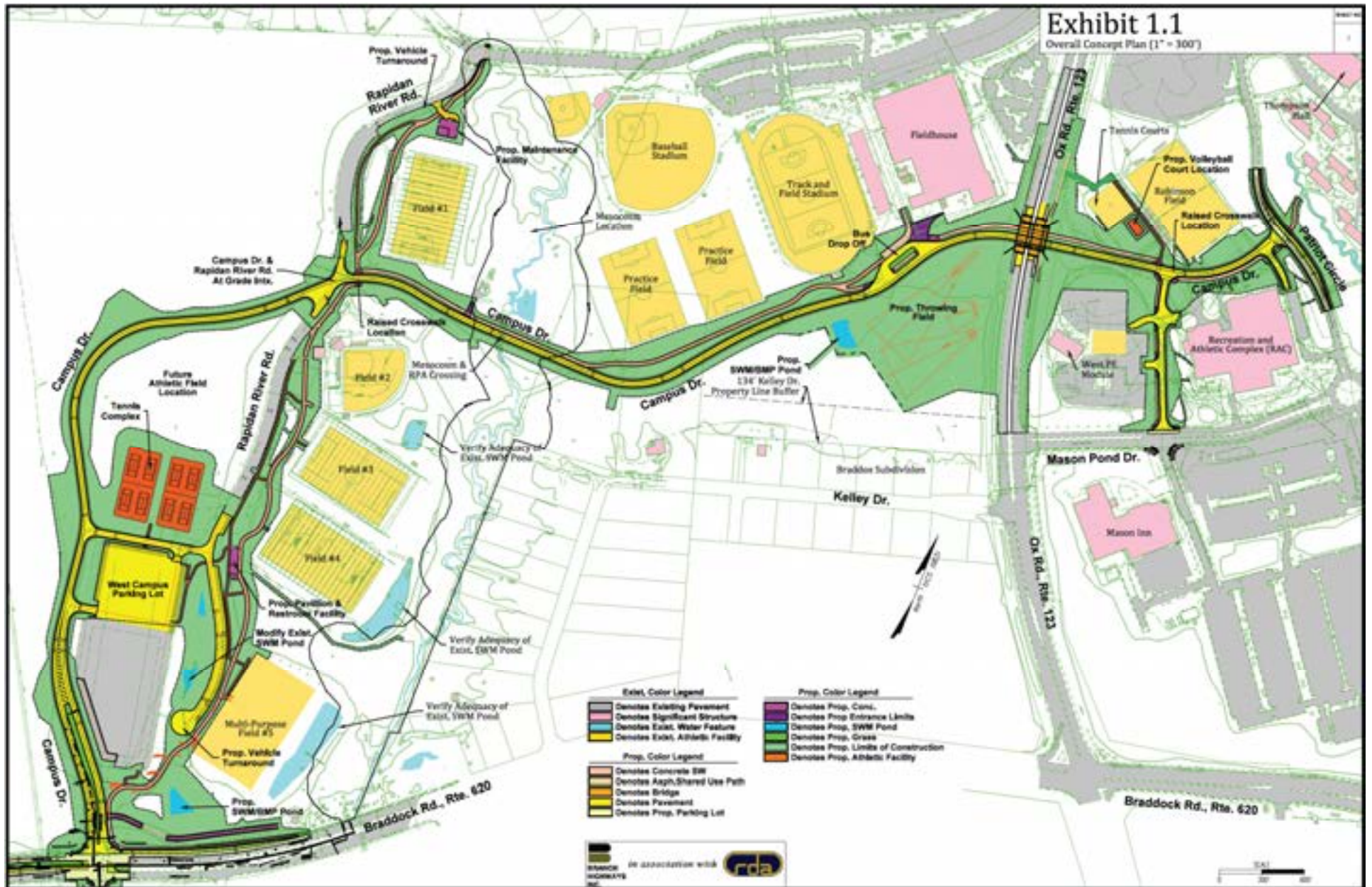


Agenda

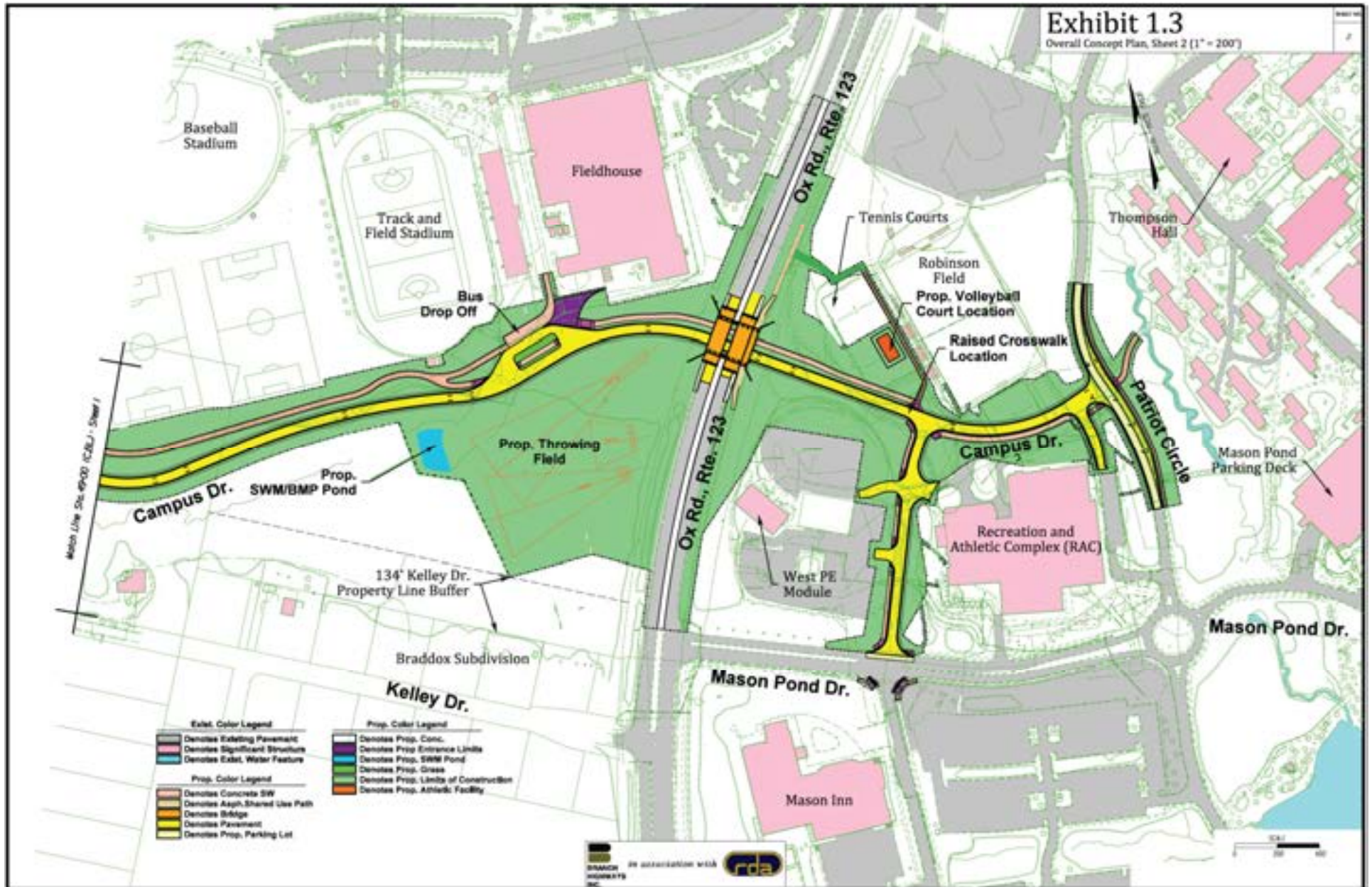
- Campus Drive Update
 - Overall Design Update
 - Bridge Image Update
 - Overall Schedule Update
 - Kelly Drive Work & Schedule
- Discussion of Town & Gown Submission
- Baseball Stadium Improvements



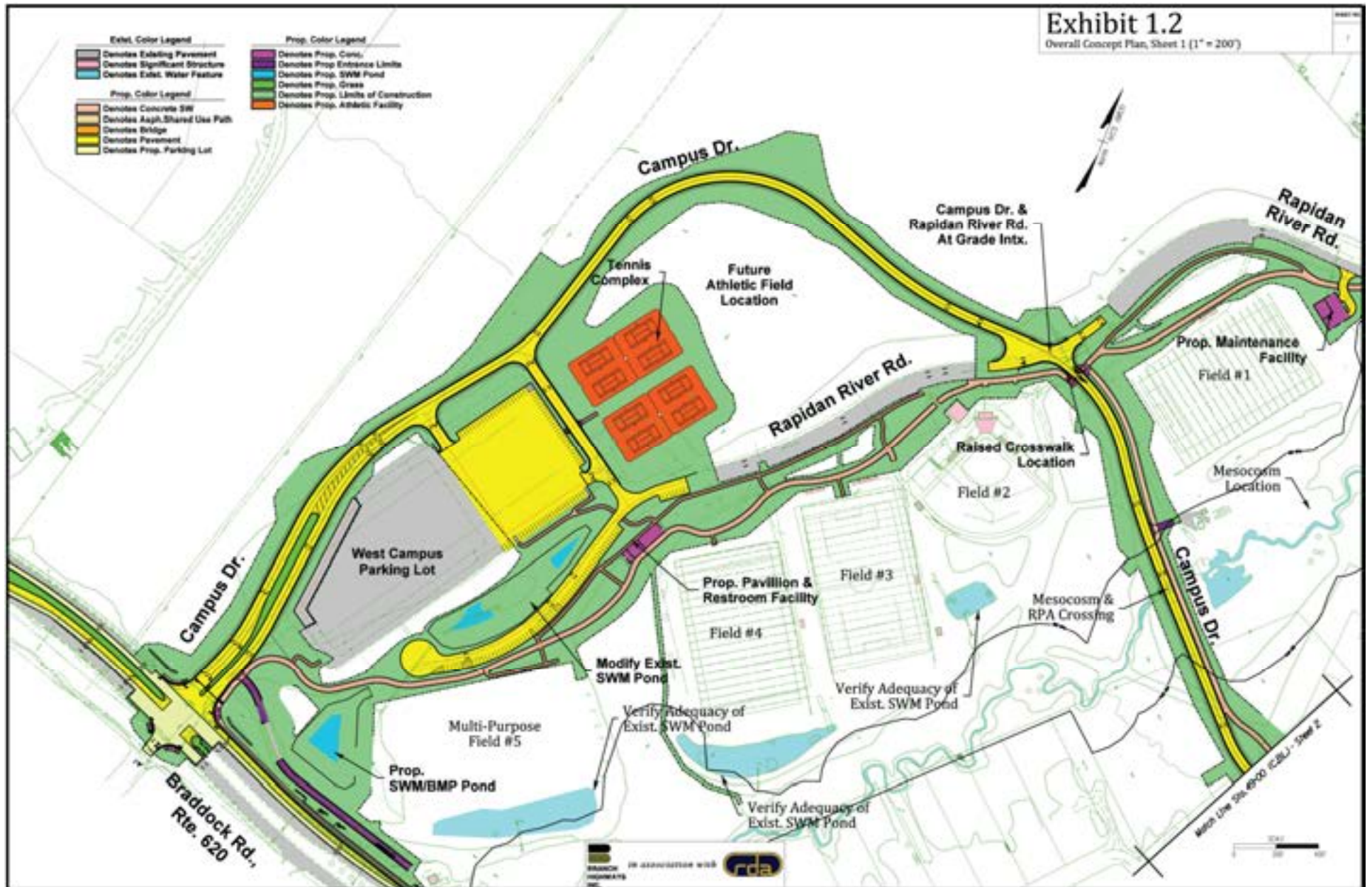
Project Overview



East Campus



West Campus



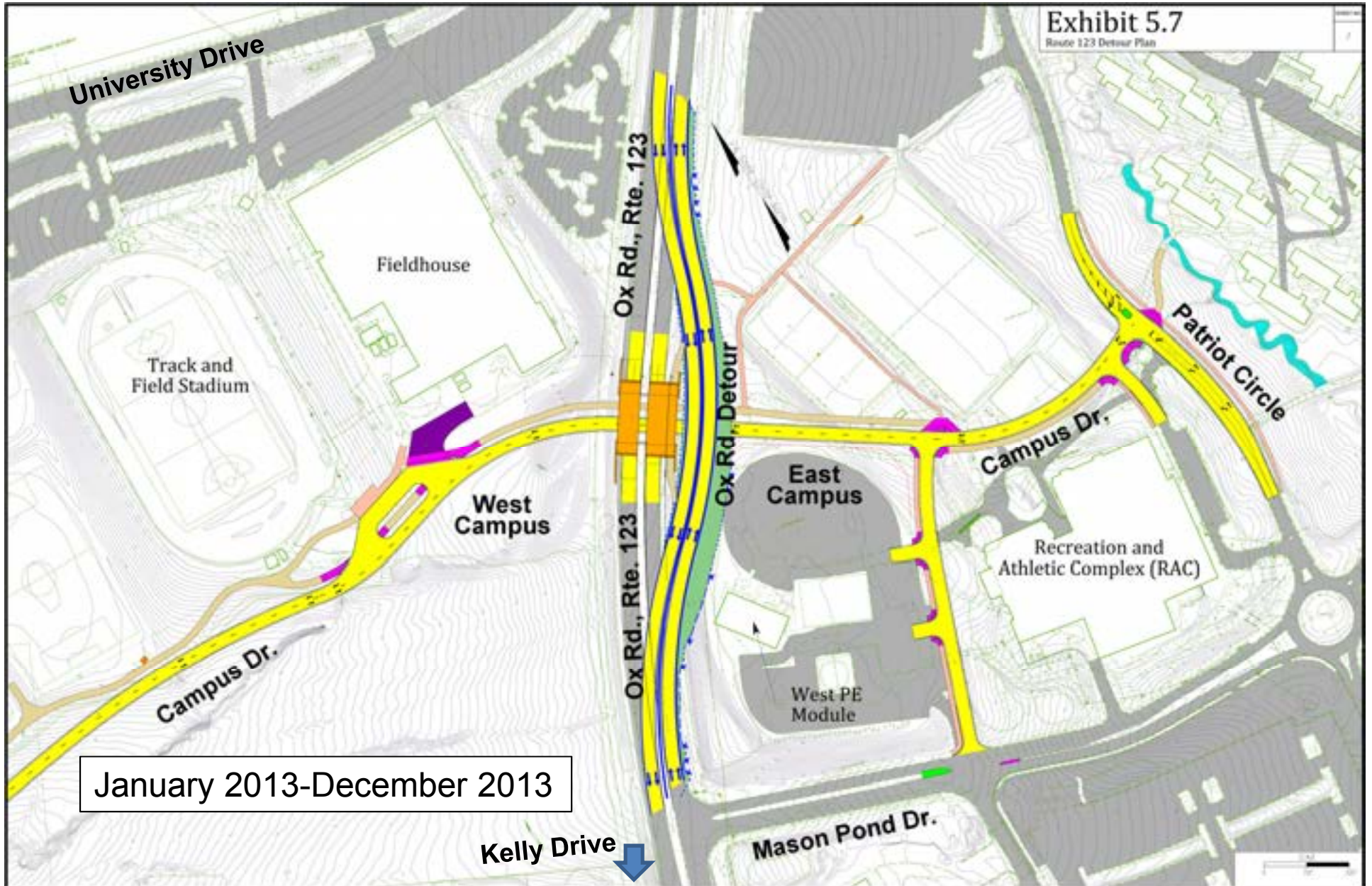
Bridge Image

ELEVATION: BRIDGE OVER CAMPUS DRIVE

VA 123



Detour at 123



Overall Schedule Review

- Phase 1: Detour VA 123 to the East
 - Work will start: 21DEC12; Detour activated: 21JAN12
- Area/Phase A:
 - Bridge Construction (January 2013-December 2013)
 - Begin Excavation and Utility Relocations – Start in late January
 - Prestwick Intersection (January 2013-December 2013)
 - Trailers Go in and Pole Relocations in January
- Area/Phase B: East Campus Work Around RAC (Spring 2013-Summer 2013) – Exact times being worked
- Area/Phase C: West Campus Work (Summer 2013-Fall 2013) – Exact times being worked

Kelley Drive Storm Water Work

- Design concepts have been developed by RDA/Branch
- Mason and Branch to engage with local community to determine best path forward and to refine the design
- Mason, Branch and VDOT to team on how to execute the work best
- Engagement with those directly affected will occur in January and February 2013
- Work is tentatively planned for Spring of 2013

Town & Gown Submission

- International Town and Gown Association: Call for Conference Papers
 - 2013 International Town and Gown Association 8th Annual University-City Relations Conference
 - “Fostering Reasonable Expectations”
 - Deadline: February 1, 2013
 - <http://www.itgau.org/content.aspx?ContentID=1872>
- When: June 2-5, 2013; Where: Buffalo, New York
- Transportation Master Plan and Campus Drive as a Model for University/Community Solutions to Local Transportation Needs



Baseball Stadium Improvements



Baseball Site Plan



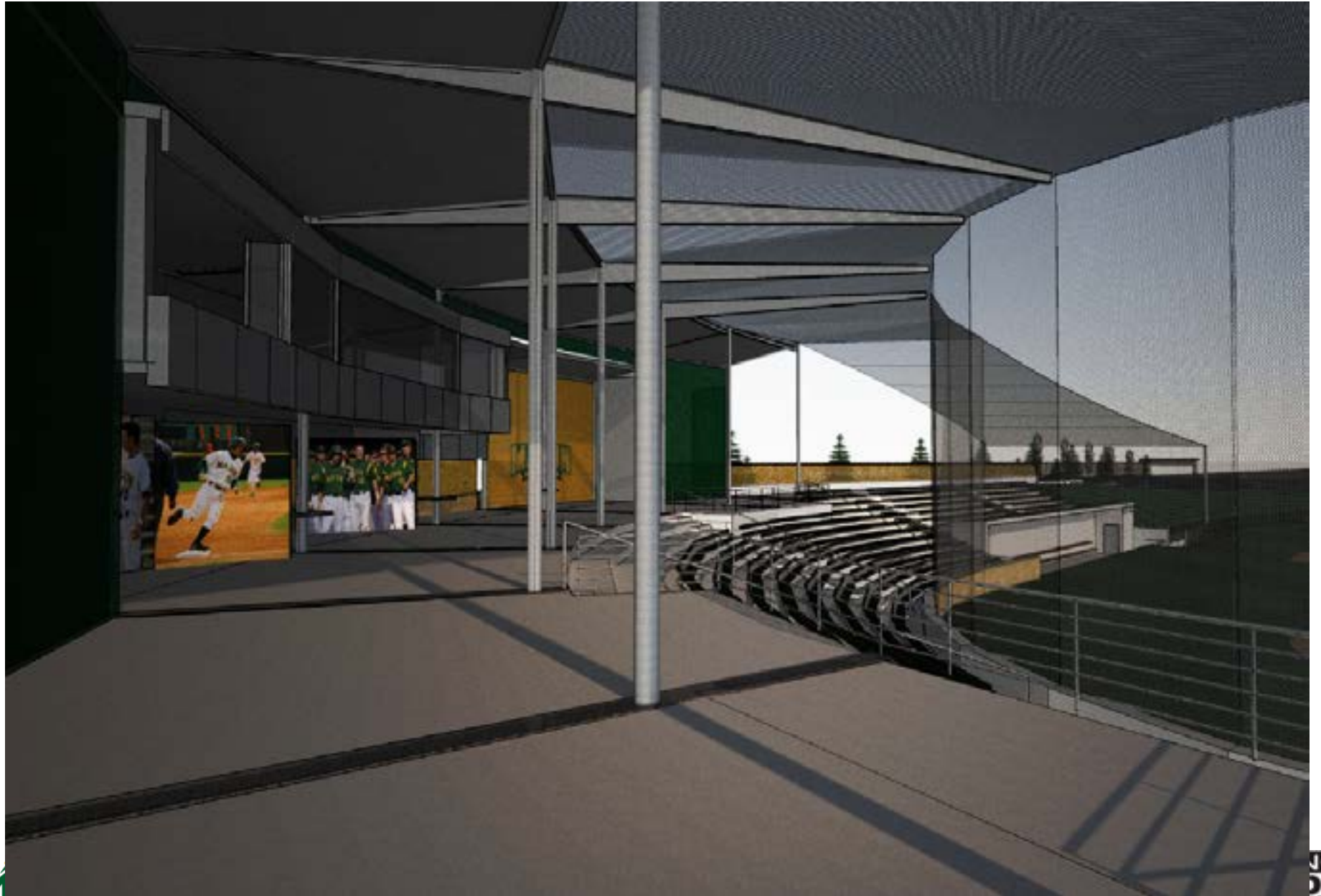
View from North of University Drive



View from West



Baseball Stadium Concourse



View of Stadium from the Field

